

Breakout Session 1 Handouts

Dr. Hank Bohanon

Center for School Evaluation
Intervention and Training

<http://www.luc.edu/cseit>

hbohano@luc.edu

ACTIVITY

Designing School-Wide Systems for Student Success *A Response to Intervention Model*

Academic Systems

Behavioral Systems

Tertiary Interventions/Tier 3:

Secondary Interventions/Tier 2:

Universal Intervention
Tier 1:

80-90%



1-5%



5-10%



1-5%



5-10%



80-90%

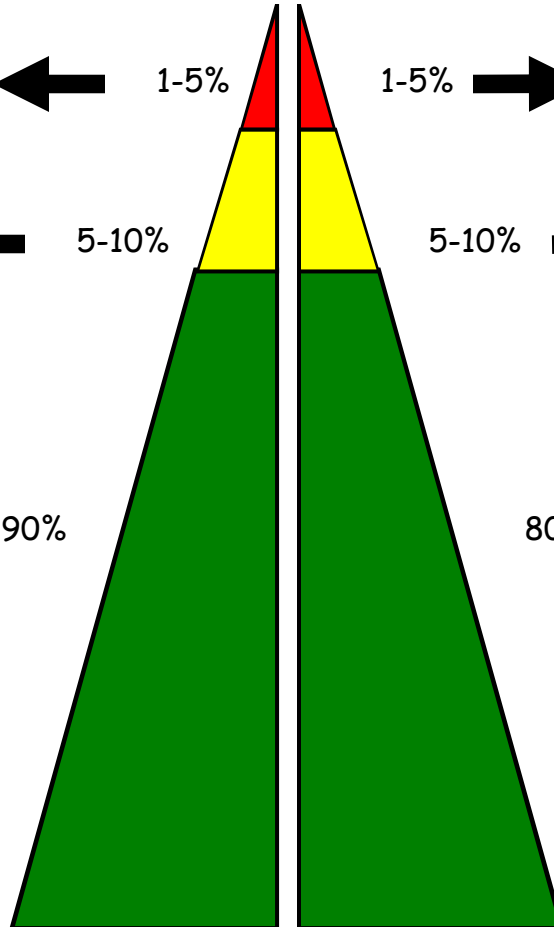


Tertiary Intervention/Tier 3:

Secondary Interventions/Tier 2:

Universal Intervention/Tier 1:

Ed Excellence

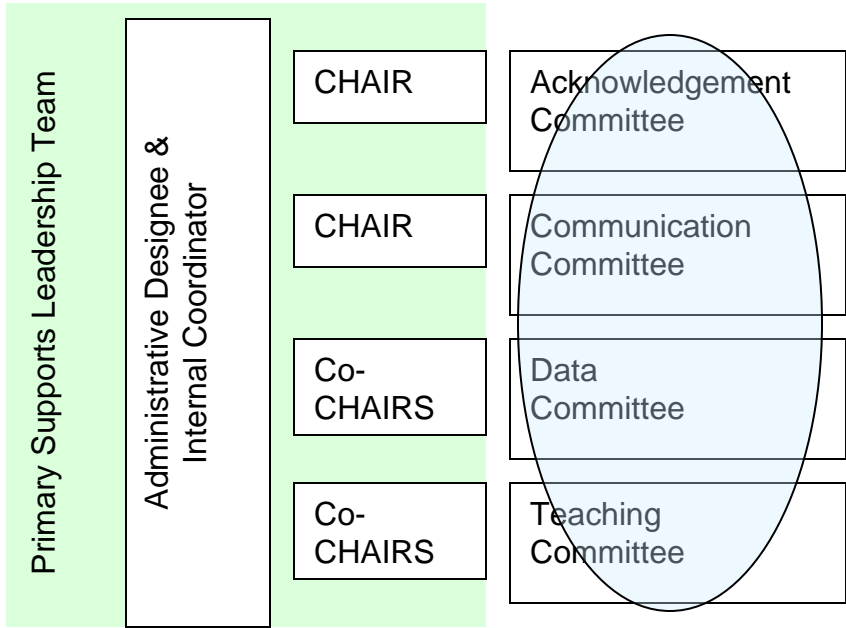
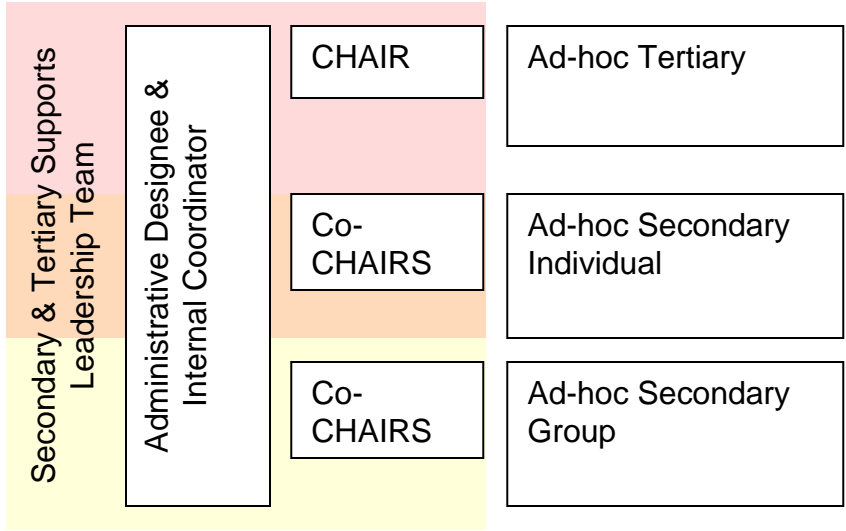


State-wide
or District-
wide
Coordinator

External
Coach for
Secondary
& Tertiary
Supports

External
Coach for
Primary
Supports

Administrator



MISCONDUCT REPORT

SCHOOL: Foreman High School
UNIT NUMBER: 1330

STUDENT/OFFENDER NAME: _____ Last First Grade: _____

Student ID Number: _____

Date: _____ Time: _____ AM PM

Non CPS Student

GANG RELATED:

Yes No

Area where misconduct occurred:

(Check one) Classroom Halls Library Washroom Cafeteria
 Parking Lot Gym Locker Room Bus Off Campus
 Special event/assembly/field trip Other _____

NARRATIVE (If Needed):

Possible motivation for misconduct:

(Check One) Obtain peer attention Obtain adult attention Obtain items/ activities
 Avoid tasks/activities Avoid peer(s) Avoid adult(s)
 Don't know Other _____

Staff Member completing this report: _____

(This section to be completed by the Dean Only)

Misconduct Code#: _____

Incident Report Number: _____

ACCIDENT REPORT COMPLETED: Yes No

DISCIPLINARY ACTION TAKEN:

Conference with student Time in Office Parent Contact
 Teacher/Student Conference Teacher/Student/Parent Conference
 Detention Saturday Detention
 Other _____ In-School Suspension _____ Out-of-School Suspension _____

(NOTE: NUMBER OF DAYS MUST BE STATED)

Removed from Class Expulsion
 Disciplinary Reassignment _____

Hearing Conference Date: _____

Police Notification
 Arrest: P.D. RD. #: _____

Suspension Homework Assigned by: _____

Dean: _____ Approved By: _____

Teacher vs. Dean vs. Attendance Managed Behavior

Teacher Managed Behavior	Dean & Attendance Office Managed Behavior
<p>Attendance to class:</p> <ul style="list-style-type: none">▪ Teacher reports on IMPACT* <p>Tardy to class:</p> <ul style="list-style-type: none">▪ Teacher reports on IMPACT* <p>Behaviors to be logged by teacher:</p> <ul style="list-style-type: none">▪ Excessive talking▪ Insubordination▪ Off task▪ Passing notes▪ Drinks/food▪ Headphones▪ Cell phones▪ Missing homework▪ Not prepared for class▪ Inappropriate language▪ Dishonesty▪ Dress code▪ Cheating/Plagiarism <p>Note: All behaviors listed above become office managed behaviors after repeated violations and after teacher has tried to resolve the matter first in the classroom and with parent(s). See behavioral strategies sheet as a suggestive guide. If behavior becomes egregious and SEVERELY DISRUPTS CLASSROOM INSTRUCTION, it becomes a matter for the deans. Teacher annotates repetitive behavior violations.</p>	<p>Note: All Behaviors below are either outside the teacher's control or are safety issues that need office attention right away.</p> <p>Attendance Office:</p> <ul style="list-style-type: none">▪ Cutting class(es)▪ Excessive tardiness to class/school▪ School Attendance▪ I.D. (safety issue) <p>Generally, all attendance matters are handled by the attendance office. Non-attendance behaviors are referred to the deans.</p> <p>Deans Office:</p> <ul style="list-style-type: none">• Repetitive minor offences. (Accompanied by log)• Fighting• Vandalism• Verbal/Physical Threat• Gang Representation• Drug Violation• Arson• Hallway Disruption• Harassment (Sexual/Bullying)• Assault• Weapons

General Procedure for Dealing with Problem Behaviors

